

# NEWSLETTER

## HIGHWOOD COPSE PRIMARY SCHOOL



Above: Drone images courtesy of Julian Belmont [10/01/2019]

### Project Progress

Works on site have resumed following the Christmas break and are still progressing according to the programme, despite three days lost during the past month due to adverse weather conditions. Planned construction activities for the next month include -

- Base and macadam to road extension
- Substructure brickwork
- General external works
- Foul pumping station to existing private foul pumping station
- Bases to foul pumping station and sprinkler bases
- Cycle shelter base and foundations
- Commence Steel Frame high levels
- Complete storm drains to road extension and connection to existing college storm drain
- Relocation of heras fence-line in preparation for fencing

Significant subcontractor and supplier appointments have now been made, with local contractors being selected wherever possible in order to support the regional economy

### Sample Materials:

The following materials for the build currently require the approval of the client -

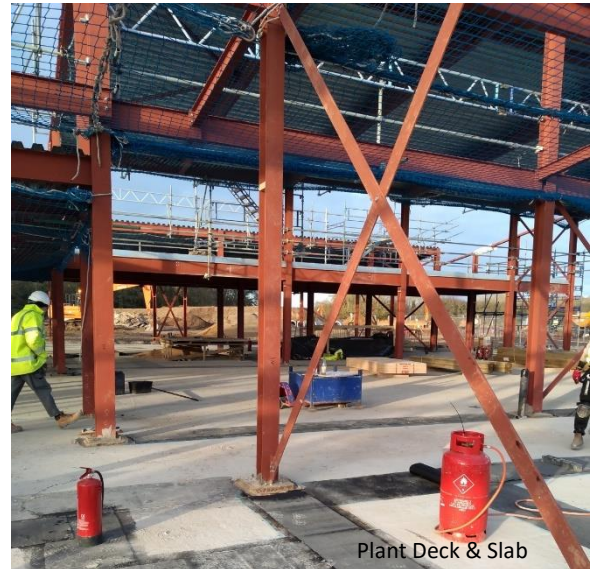
- Brick and mortar samples - a sample wall has been built on site for review
- A multipurpose floor covering in Natural wood for the Hall floor
- A sample long-strip single ply metal roofing has been approved
- We currently await samples for the windows and curtain walling for approval

### Safety First

Health, Safety and protection of the environment is of prime concern on all our sites, and an internal Health & Safety inspection of the site on 11 December scored an impressive 95%, emphasising the importance that Dawnus place on this facet of each build

95%

## Project Progress - Photograph Gallery



## Developing Community Links

We continue to develop our links with the local community and regularly liaise with key staff at Newbury College to review further opportunities for community engagement

Of note, Site Manager Bob Needham attended a second meeting at the College with prospective parents of the new school on 10 January, where he responded to questions and discussed the ongoing progress of the project



### SITE & OFFICE CONTACT DETAILS

Bob Needham - Site Manager  
Highwood Copse Primary School  
Email: [bobneedham@dawnus.co.uk](mailto:bobneedham@dawnus.co.uk)  
Tel: 07717 873568

Dawnus Construction Holdings Limited, Thatcham Business Village, Thatcham, RG19 4LW  
Tel: 01635 879409 Web: [www.dawnus.co.uk](http://www.dawnus.co.uk)

Newbury College website: <https://www.newbury-college.ac.uk>



You can also follow the progress of the project on Twitter: @DawnusConstruct